



OR
AL

150-24 IRONWORKER

HEAVY-DUTY DUAL OPERATOR HYDRAULIC IRONWORKER

EST.



1974



UNI-HYDRO

For over 45 years Uni-Hydro has built the finest line of ironworkers, plate shears and punch tooling in the fabrication industry. All Uni-Hydro machines feature our patented linkage system and are engineered for exceptional performance and longevity. The result is each ironworker does exactly what an ironworker is supposed to do; cut, bend, notch and punch steel with the least amount of deformation possible.

Some people call us the best kept secret in the Machine Tool Industry. We hope you enjoy exploring our machines and decide to put a legendary Uni-Hydro on your shop floor soon!

FOR MACHINERY & TOOLING INQUIRIES CALL OUR SALES TEAM AT

[800] 328-0036





PRO 150 TON

MODEL PRO 150-24 IRONWORKER



* Shown with optional Slug Type Angle Shear

In the World of Uni-Hydro's immense ironworkers the **PRO 150 ton** model stands above the rest. These ironworkers are the definition of monstrous, with a reputation for tremendous punching ability given the sheer mass of support and design. The separate punch arm can be built with a 12-24" throat and creates so much power, any fabrication job is done with ease.

Uni-Hydro's **PRO Series Dual Operator** models are designed with separate cylinders allowing operators to run both the punching station and the back shearing section, which includes a flat bar shear, a power cavity and a notching station.

FEATURES:

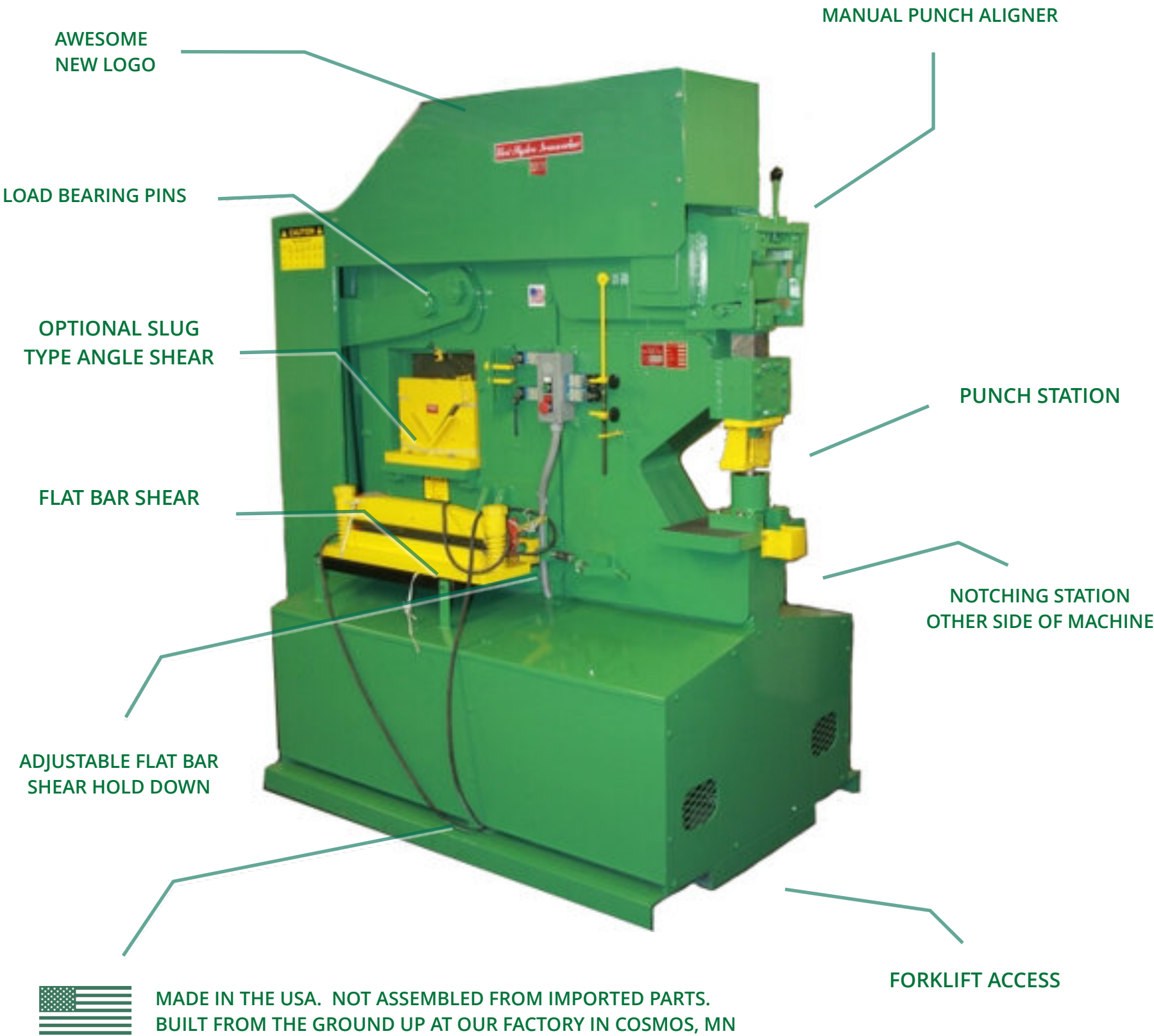
- 150-ton open throat punch
- Four different work stations can be used without retooling stations
- Manual punch aligner - Punches and dies can be aligned without lowering machine under power
- Two-stage hydraulic pump
- Two-cylinder design maximizes machine strength, safety, reliability and life
- 24" bar shear with 4-sided blades
- Magnetic starter for safety and reliability
- Fixed or adjustable bar shear hold-down
- Portable electric foot control
- Variable stroke control
- Built for forklift handling

SPECIFICATIONS

Model	PRO 150-24	Pipe Notcher (Sch 40 or 80)	1/2", 3/4", 1", 1-1/4", 1-1/2", 2" - Larger avail
Tonnage	150	Brake	6", 9", 14", 18", 24" capacity
Throat Depth	12"-24"	Channel Shear	2", 3", 4", 5", 6", 7", 8"
Punch	4" hole in 7/16" mild steel 1-7/8" hole in 1" mild steel	Strokes Per Min Light Material Max Capacity	Light Material - 40 Max Capacity - 8
Bar Shear	1/2" x 24" , 5/8" x 20" 3/4" x 18", 1" x 14"	Hydraulics	3,000 psi
Angle Shear 90°	Slug Type - 6" x 6" x 1/2" Sever Cut - 6" x 6" x 3/8"	Oil Capacity	28 gallons
Miter Angle 45°	Slug Type - 4" x 4" x 1/2" Sever Cut - 4" x 4" x 3/8"	Motor	Standard - 7.5 HP, 220v / 3PH Optional - 7.5 HP / 1PH
Rod Shear	Round (Max) - 1-1/2" Square (Max) - 1-1/2"	Dimensions (L x W x H)	79" x 46" x 91-1/2"
Coper Notcher 90°	Notcher Station 4" x 4" x 5/16" Punch/Power Cavity 4" x 4" x 1/2"	Weight	8,000 lbs
Square Notcher	Notcher Station 3" x 3" x 5/16" Punch/Power Cavity 3" x 3" x 3/8"	TOOLING AND ACCESSORIES - PAGE 18 & 19	



UNI-HYDRO IRONWORKER PRO 150-24 FEATURES



Outfit your Ironworker for maximum productivity with these exceptional tooling choices, optimized for the Power Cavity, Punch and Notching Stations.



SLUG TYPE ANGLE SHEAR



UNIVERSAL SEVER HOUSING FRONT



UNIVERSAL SEVER HOUSING BACK



UNIVERSAL SEVER HOUSING



SPRING RETURN BRAKE



2-PART BRAKE



PIPE NOTCHER



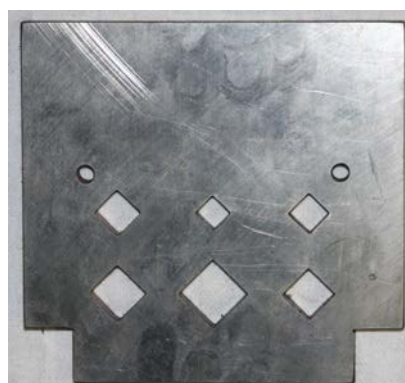
SQUARE NOTCHER



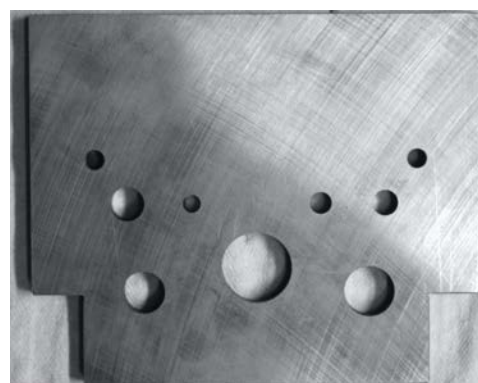
V-COPER NOTCHER



CHANNEL SEVER PLATE



ROD SEVER PLATE



BAR SEVER PLATE



ANGLE SEVER PLATE



ACCESSORIES

OPTIMIZED FOR PRODUCTIVITY



PUNCH TABLE WITH ADJUSTABLE JIG



BAR SHEAR TABLE



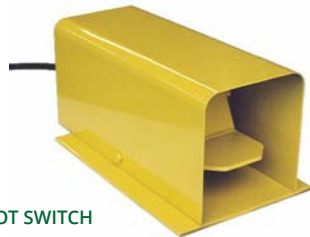
STEEL BIN CATCHER



PUNCH & DIE RACK



PUNCH NUT WRENCHES



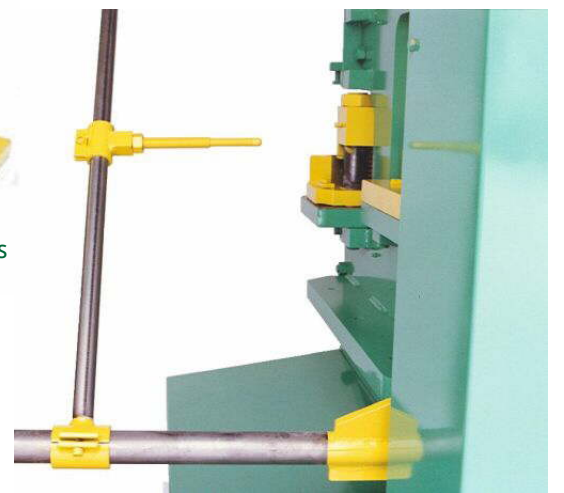
REMOTE FOOT SWITCH



OVERSIZE DIE STANDS



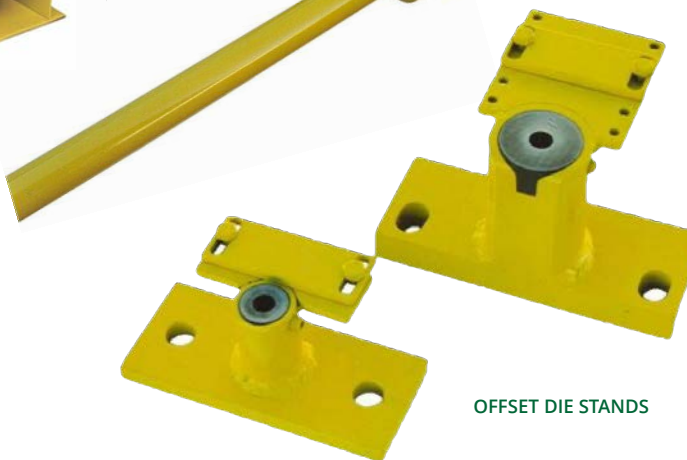
BAR SHEAR STOP



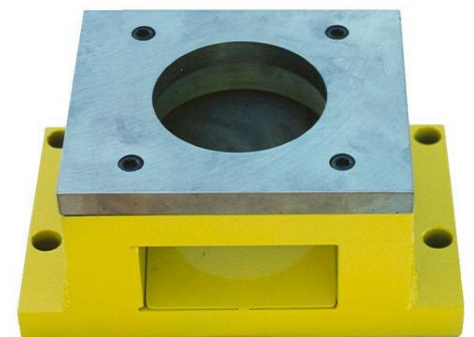
DELUXE BACK GAUGE



OVERSIZE DIE STAND



OFFSET DIE STANDS



SPECIAL DIE STAND WITH 7x7 PLATE DIE



OVERSIZE DIE SETS



GREASE BANK



OFFSET DIE STANDS

WHY INVEST IN A UNI-HYDRO?

1

WE HAVE A LONG HISTORY BUILDING IRONWORKERS IN AMERICA

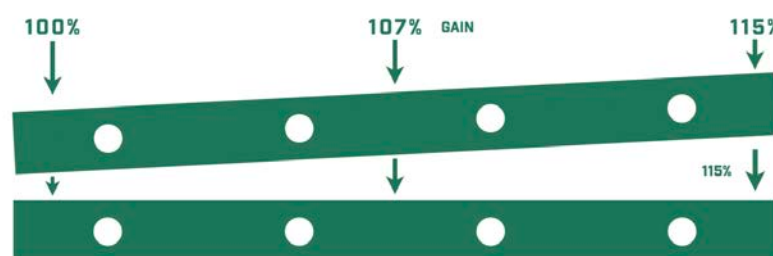
The Dvorak family has been producing hydraulic ironworkers since 1949, with the Uni-Hydro brand in business for over 45 years. Jim Dvorak holds 30 international and 6 stateside patents on ironworkers, with no other ironworker manufacturer or individual coming close to as many patents held by Jim.

2

PATENTED POWER

The patented mechanical linkage system designed by Jim Dvorak moves the working center plate downward with a slight movement which breaks the molecules of steel in multiple directions in a slicing motion. This ensures the cleanest cuts available in the industry. The design methods found on a Uni-Hydro ironworker have incorporated the tooling stations to push in a non-attached or non-binding method. This ensures our punch stations and power cavity stations operate tooling in a vertical position.

**UNI-HYDRO SHEARS
GAIN POWER UP TO 115%
THROUGH THE CUT!**



3

ENGINEERED FOR A TIGHT FIT AND FINISH

Our rigorous manufacturing process ensures the primary plates are 100% accurate. Each machine has almost 70% more load bearing pin surface than a competitor's machine. This creates a more efficient working cycle throughout the machine's working process. Coupled with this is our world famous mechanical linkage system, that ensures each guillotine cut on our bar shear is as accurate as is possible.

4

EXCEPTIONAL PUNCHES AND TOOLING

Our tooling doesn't wear out like other machines. Our four-side bar shear blades come with an unconditional 3-Year warranty on the original edge. No other manufacturer offers this guarantee. Our punches and dies are purchased in pairs of the exact same size, not mismatched like the rest of the industry. Each punch and die is coated with oil with a next-level bluing process to prevent oxidation and reduce slag build up. With our punches and dies sitting on the shelf and not rusting you are ensured of getting the best punches & dies for your money.

5

DESIGNED WITH YOUR SAFETY IN MIND

Uni-Hydro machines are designed for safety of an operator, with shields and pedals in exactly the right place. Uni-Hydro Inc is an American based manufacturing company that **protects our company AND customers** with appropriate product Liability Insurance. Even UNI-HYDRO MANUFACTURED Punches, Dies and Tooling are covered by Uni-Hydro's Product Liability Certification when used in a Uni-Hydro ironworker. With Foreign importers depending on liability pass-through to off-shore manufacturers, who do trust more with your valuable purchase dollars?



IRONWORKER

PUNCH TONNAGE CHART

HOLE DIAMETER	3/16"	5/16"	7/16"	1/2"	9/16"	5/8"	11/16"	3/4"	13/16"	7/8"	15/16"	1"	1-1/8"	1-1/4"	1-1/2"
THICKNESS	PRESSURE IN TONS														
18 GA	0.5	0.7	1.6	1.9	2.1	2.4	2.6	2.8	3.1	3.3	3.5	3.8	4	4.2	5.6
16 GA	0.6	0.9	2.1	2.3	2.6	2.9	3.2	3.5	3.8	4.1	4.4	4.7	4.8	6	7
14 GA	0.7	1.2	2.6	2.9	3.3	3.7	4	4.4	4.8	5.1	5.5	5.9	5	7.2	10
12 GA	1	1.5	3.6	4.1	4.6	5.1	5.7	6.2	6.7	7.2	7.7	8.2	7	10	12
10 GA	1.3	2	4.6	5.3	5.9	6.6	7.3	7.9	8.6	9.2	9.9	10.6	10	13	15
5/32"	-	2.3	5.4	6.1	6.9	7.7	8.4	9.2	10	10.7	11.5	12.3	11	16	19
3/16"	-	2.8	6.4	7.4	8.3	9.2	10.1	11	12	12.9	13.8	14.8	17	19	23
1/4"	-	-	8.6	9.8	11.1	12.3	13.5	14.7	16	17.2	18.4	19.7	23	25	30
3/8"	-	-	12.8	14.8	16.5	18.5	20.2	22.1	23.8	25.8	27.5	29.5	33	38	45
1/2"	-	-	-	19.7	22	24.6	26.9	29.5	31.8	34.4	36.8	39.4	45	50	60
5/8"	-	-	-	-	-	30.8	33.7	36.9	39.9	43	46	49.2	56	63	75
3/4"	-	-	-	-	-	-	-	44.3	47.7	51.7	55.2	59	68	75	90
1"	-	-	-	-	-	-	-	-	-	-	-	80	90	100	120

OVER 20,000 PUNCH & DIE SETS IN STOCK!



UNI-HYDRO

BUILT IN COSMOS, MN 

FOR MORE INFORMATION VISIT

WWW.UNIHYDRO.COM

(800) 328-0036